

# Sculpture Maquettes

Janos Enyedi began creating sculpture in 1974. He first constructed minimalist shapes from birch plywood primed and painted black.

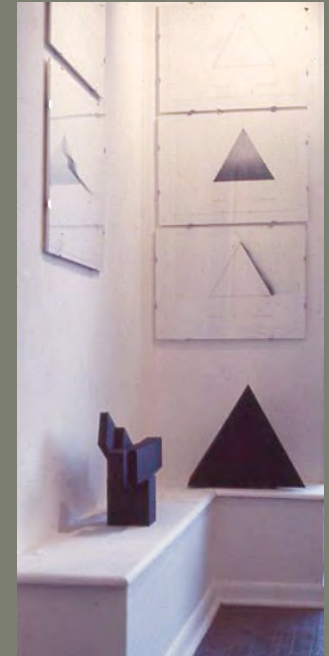
In the summer of 1976 he participated in a week-long seminar on welded steel sculpture at Bennington College in Vermont. The seminar guest instructors were Tim Scott (sculptor and assistant to Anthony Caro) and Larry Poons – better known as an abstract painter. The energy and talent imparted in this seminar started Janos on his love of steel as medium and sculpture as his preferred form of artistic expression.

He took a day trip from Bennington to Bolton Landing, on Lake George, NY – the studio of the late David Smith. While visiting Smith's studio, Janos saw a welding glove, sitting on a flat file. He put the glove on. Janos says that sparks shot from his finger-tips. Janos returned to the Bennington seminar where he created his first welded steel sculpture, "Albany" using scrap steel from the same Albany scrap yard that David Smith sourced for many of his steel sculptures.

On the drive up to Bennington, Janos had noticed large scale sculpture off to the right of Highway 17. He asked the staff at Bennington if they knew anything about it. They told him that what he had seen was Storm King Art Center in Mountainville, New York – where the first of 2 David Smith exhibitions was being shown. On the trip home to Virginia, Janos visited Storm King for the first time. The beauty of the sculpture in the landscape made a lasting impression.



Minimalist Sculpture, 1974



Albany, 1976

## Sculpture Maquettes

Janos often works out the forms for his sculpture in paper constructions using layers of formed paper and illustration board. He finds that the translation from paper to steel can be quite accurate.

The following are several views of sculpture maquettes made in this way.



# Sculpture Maquettes

Janos often works out the forms for his sculpture in paper constructions using layers of formed paper and illustration board. He finds that the translation from paper to steel can be quite accurate.

The following are several views of sculpture maquettes made in this way.



# Sculpture Maquettes

Janos often works out the forms for his sculpture in paper constructions using layers of formed paper and illustration board. He finds that the translation from paper to steel can be quite accurate.

The following are several views of sculpture maquettes made in this way.



# Sculpture Maquettes

Janos often works out the forms for his sculpture in paper constructions using layers of formed paper and illustration board. He finds that the translation from paper to steel can be quite accurate.

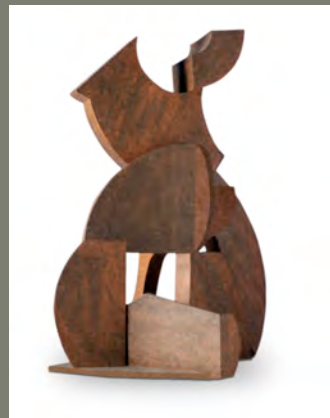
The following are several views of sculpture maquettes made in this way.



# Sculpture Maquettes

Janos often works out the forms for his sculpture in paper constructions using layers of formed paper and illustration board. He finds that the translation from paper to steel can be quite accurate.

The following are several views of sculpture maquettes made in this way.



## Sculpture Maquettes

For this series, Janos was inspired by vines from the grape arbor at Furnace Road Studio. The Maquettes are very small using the scale of actual grapevine segments, basswood and illustration board. These too, he hopes to translate into steel at a human scale.

The following are several views of sculpture maquettes made in this way.

